

Spitfire Revolving Tray Pizza Oven Gas Fired

Standard Features

Natural or propane gas
Stainless steel exterior walls (side 1 & facade), galvanized steel (side 2 & back) and aluminized steel interior walls/roof
Panoramic window above the loading door
Aluminum counter-balanced door
Digital control
Loading door with 10" high opening
Numbered solid steel or expanded metal shelves with 3" back risers
1 fluorescent light outside the oven window
Front access doors to driving system, gas and electrical components
Available with 8, 12, 16, and 24 pan capacity
Exhaust canopy (Type II)

Options

Exhaust canopy (Type I) with grease trap
Baking stone shelves
Full stainless steel exterior walls
Stainless steel floor plate and main shaft

Models

SF-4- 8 (8-pan)
SF-4-12 (12-pan)
SF-8-16 (16-pan)
SF-8-24 (24-pan)

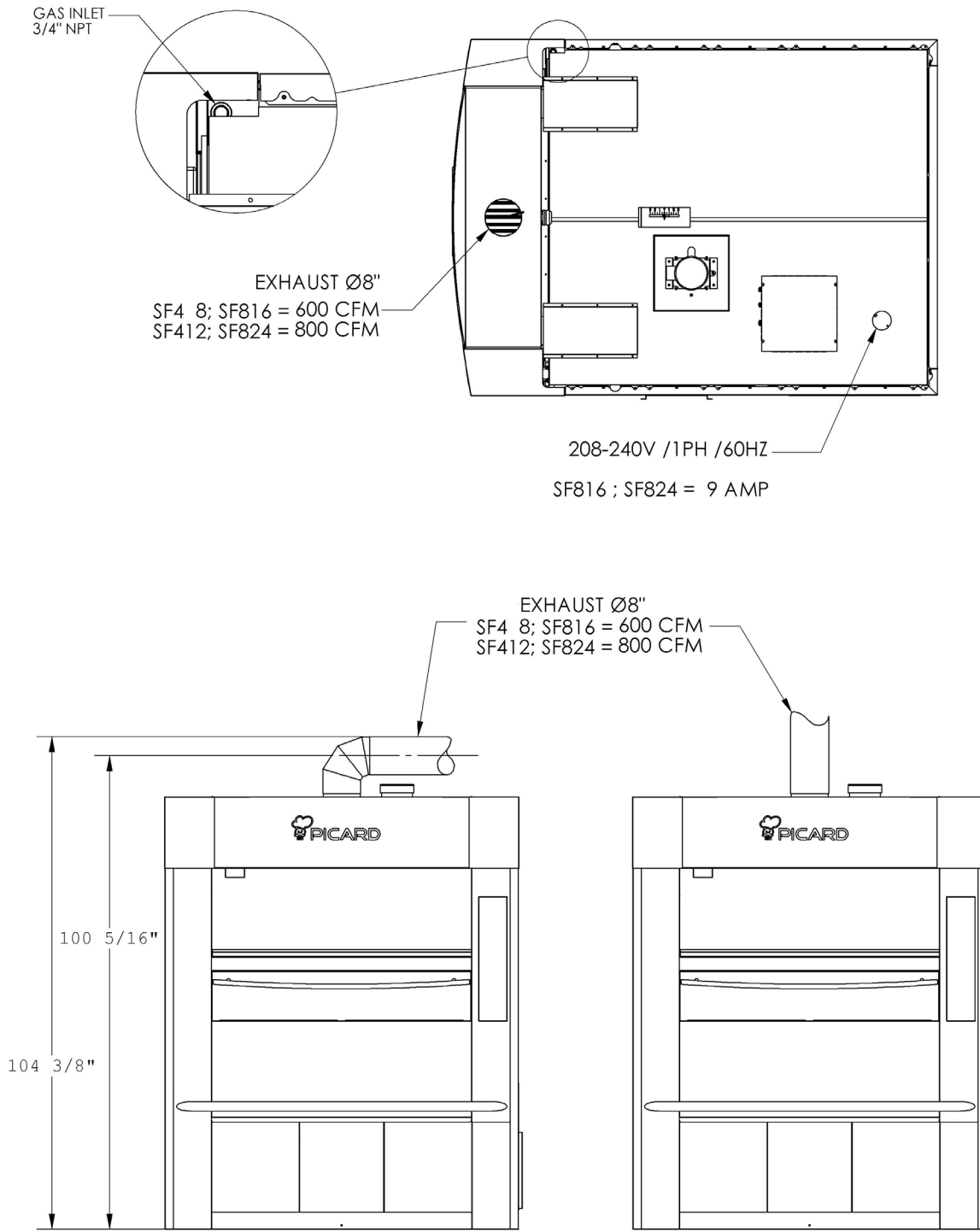
Installation

A Picard Ovens approved technician will take care of the unloading and installation at the customer's site.

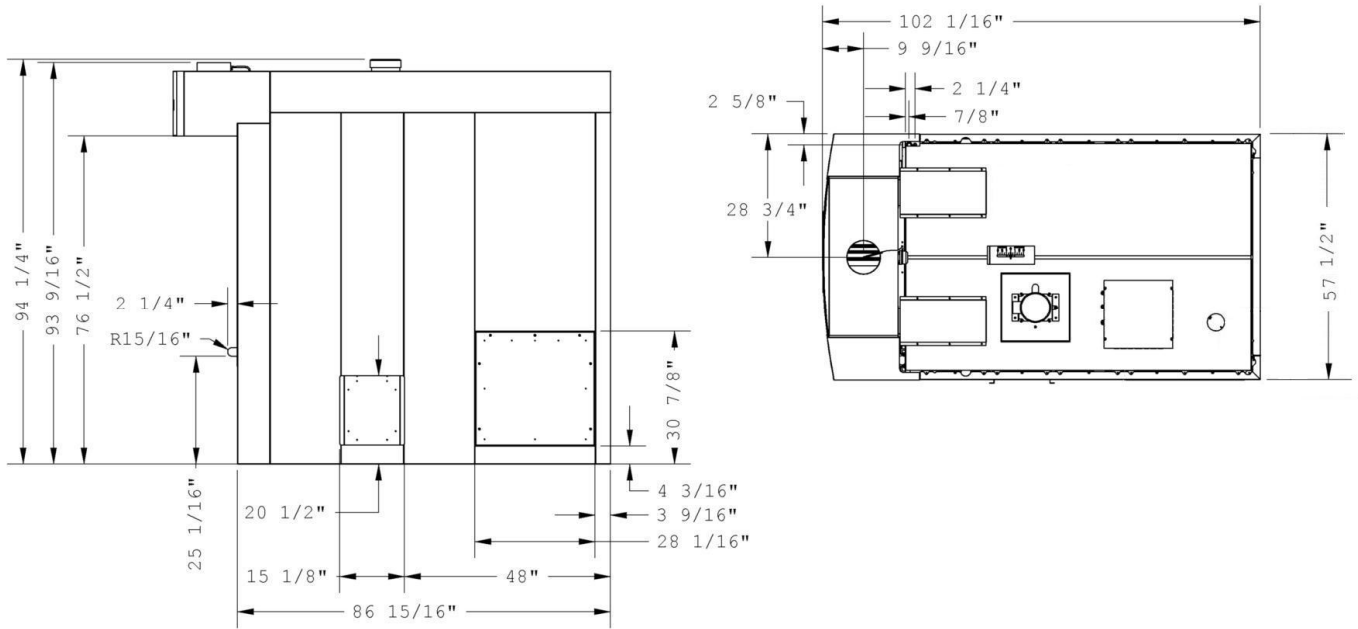
All oven parts can pass through a regular standard door and can be moved by hand.

All electrical, gas, water, and chimney hook-ups, along with the oven burner's start-up, are at the customer's expense and have to be done by the qualified installation technician and according to local codes.

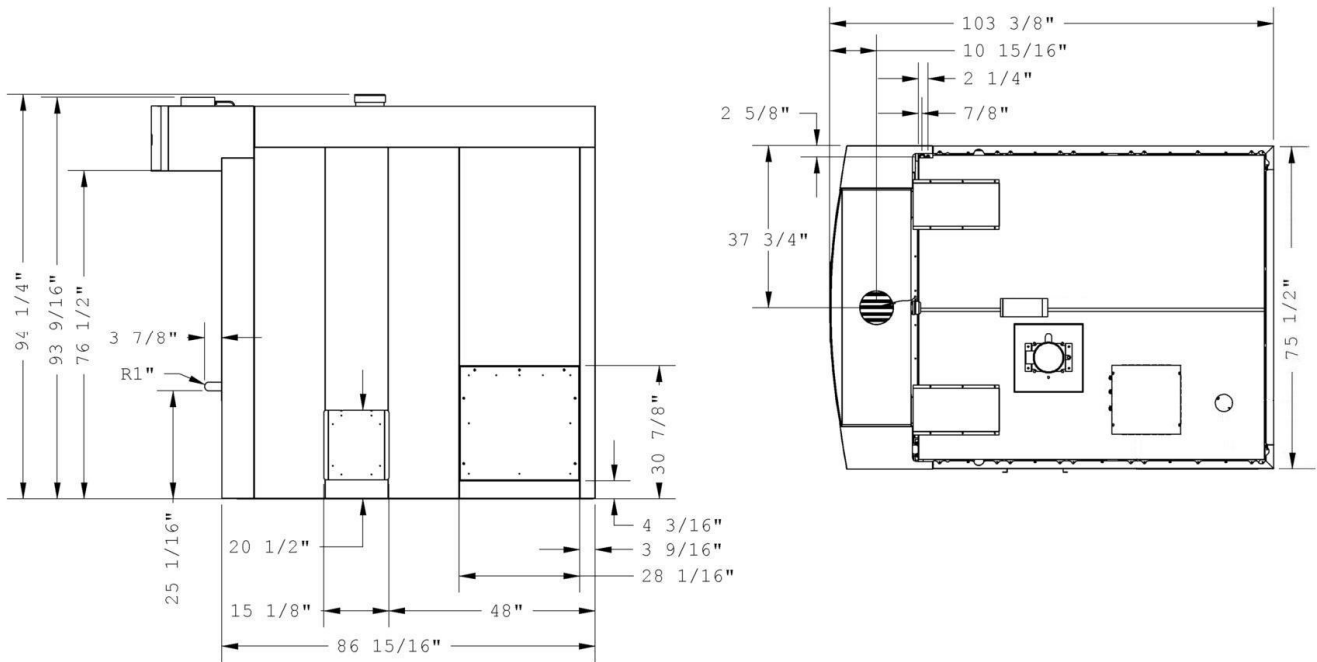


SPITFIRE PIZZA OVEN
Dimensions


SF-8-16



SF-8-24





Picard Ovens, Inc.

►RECOMMENDED MINIMUM CLEARANCES

Floor to ceiling	Side and Back to Wall	Floor	Manhole side
98"	1" for burner air intake	Approved for non-combustible surfaces	24"

►GAS SUPPLY SPECIFICATIONS

Type	Min. Gas Pipe Size	Line Pressure	Power (BTU / HR)			
			SF 4-8	SF 4-12	SF 8-16	SF 8-24
Natural Gas	3/4" NPT	5"-14" W.C.	150 000	200 000	150 000	200 000
Propane Gas	3/4" NPT	5"-14" W.C.	150 000	200 000	150 000	200 000

►SHIPMENT INFORMATION

Model	Ship Weight (1)	Crate dimensions		
		64"	92"	88"
SF-4-8	2 500 lbs	64"	92"	88"
SF-4-12	3 000 lbs	83"	92"	88"
SF-8-16	2 800 lbs	64"	92"	88"
SF-8-24	3 300 lbs	83"	92"	88"

►ELECTRICAL RATING

Model	Voltage	Phase	Hertz	Amps	Supply
SF -4-8	208-240V	1	60	9	3 wires including ground
SF-4-12				9	
SF-8-16				9	
SF-8-24				12	

►BAKING CAPACITY

Trays			Bagels	Bread			Pies	Pizzas					
Model	Qty	Size	5 oz.	18"x26" tray	1 lb	1.5 lb	9"	8"	10"	12"	14"	16"	18"
SF-4-8	4	26" X 36 1/2"	120	8	60	48	36	44	24	16	12	8	8
SF-4-12	4	26" X 54 1/2"	240	16	120	96	72	66	36	24	18	12	12
SF-8-16	8	26" X 36 1/2"	240	16	120	96	72	88	48	32	24	16	16
SF-8-24	8	26" X 54 1/2"	400	24	160	128	112	132	72	48	36	24	24

* Continuous product development is a Picard policy. Therefore, we reserve the right to change specifications and/or design without prior notice.